

Introducing a rise in productivity and revolution in workplace communication

# Welcome to Enterprise Social Collaboration



Today's business world is mobile and knows no boundaries.

GLOBALIZATION IS ACCELERATING THE NEED FOR MORE EFFICIENT COMMUNICATION SYSTEMS.



Email



Videoconferencing



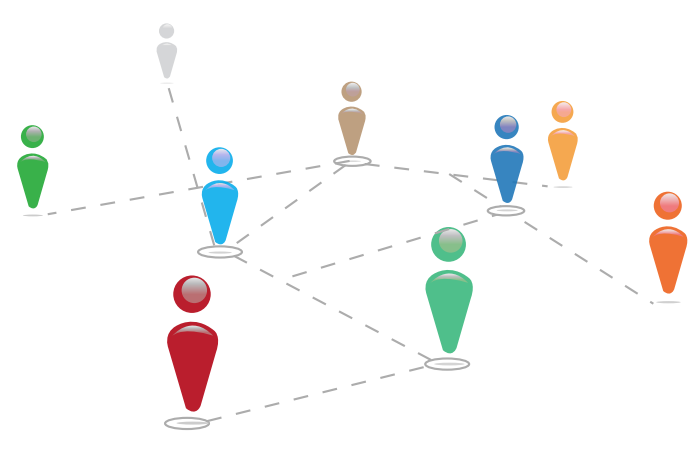
IMs

## MAY SOON BE HISTORY

This Isn't Your Conventional Corporate Intranet. It's A Living, Breathing, Thriving Network-born Through Social Tools And Technology-yet Fueled By Human Collaboration.

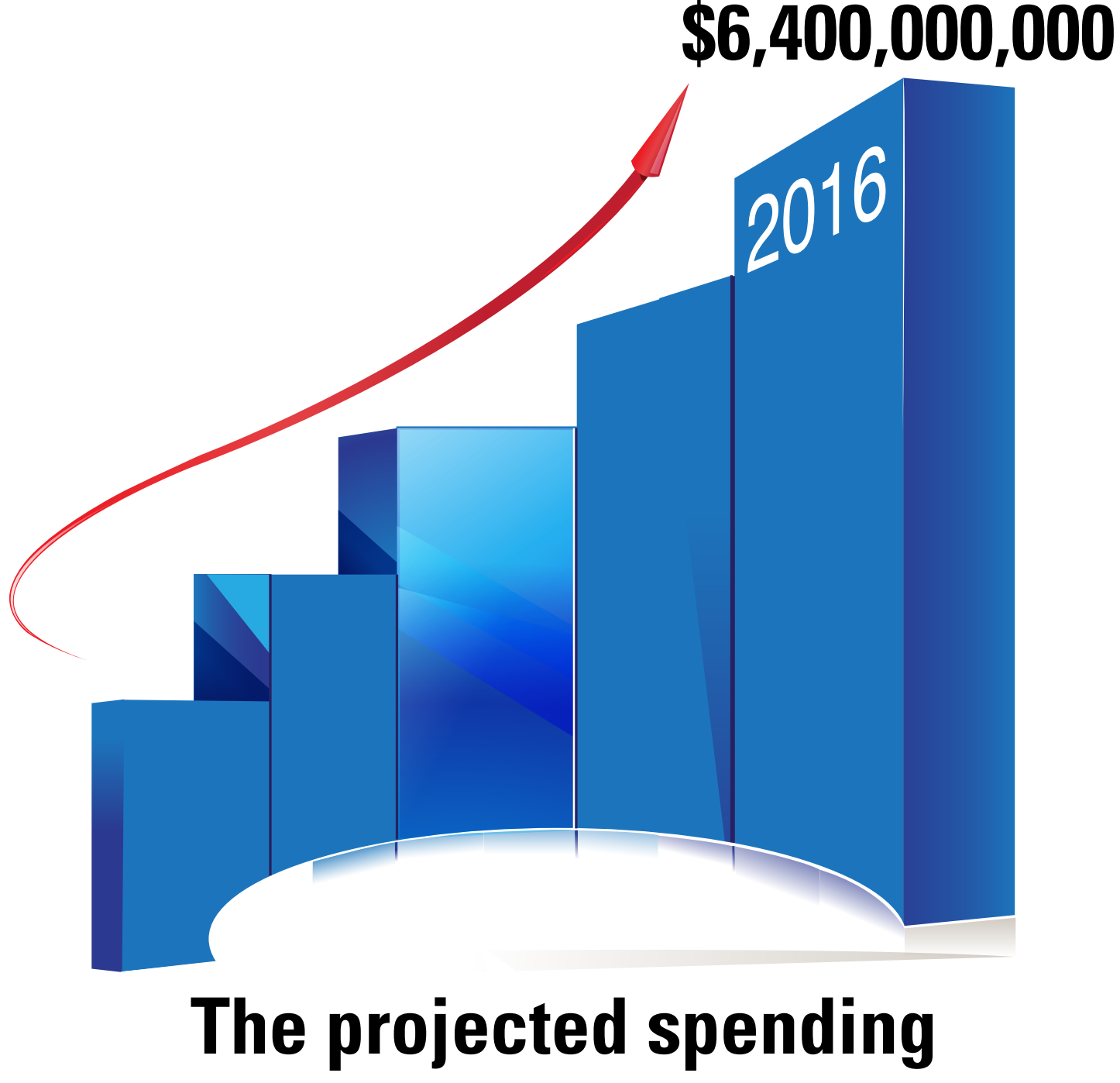
### The Past

### Now



Delivering static content.

Integrating employee sharing, commenting, editing and more.



The projected spending on Social Collaboration Software by 2016.

## SOLVE PRODUCTIVITY ISSUES AND IMPACT BUSINESS IN A BIG WAY.

EXECS AND MANAGERS USING INTERNAL SOCIAL TECHNOLOGIES CAN RAISE THEIR PRODUCTIVITY BY

# 20% to 25%



THE AVERAGE WORKER SPENDS

# 28%

OF THE DAY MANAGING EMAIL.

COMBAT "INBOX ADDICTION." KEEP EMPLOYEES INSPIRED AND FOCUSED ON REAL WORK.

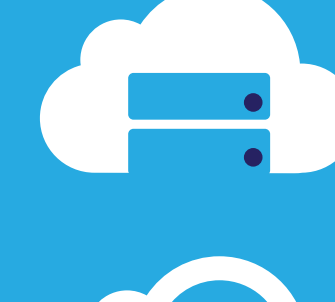
## Free up hard drives - and minds - by converging with Cloud Computing via social enterprise collaboration.



Location independence means anytime, anywhere efficiency. Work smarter. Maintain higher output.



Share knowledge – whether it's collaborating on internal documents or finding external experts – and open more doors.



Robust "think tank" of people, ideas, tools and solutions -- accessible in seconds.



Connect remotely to a focused environment. Workplace distraction costs \$600 billion annually.

Introducing SocialXtend by AgreeYa.

Built upon the robust infrastructure of Microsoft SharePoint, SocialXtend is your ideal platform for collaboration. Create interactive employee, partner and customer communities and access them on any device, from anywhere, at anytime. SocialXtend also easily integrates with several MS products, making it even more user-friendly.



For more information, visit [www.agreeya.com](http://www.agreeya.com)