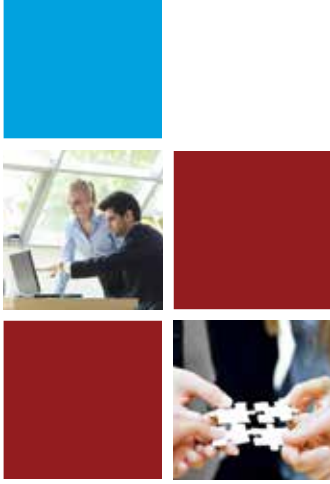




# SharePoint Health Check



## Get the Most Out of Your SharePoint Investments

Are you fully utilizing your SharePoint investment? AgreeYa can help you optimize and simplify your SharePoint environment to lower costs and improve performance.

Whether you are looking to get the most out of your SharePoint on-premise or Office 365-SharePoint online implementation, improving the performance and realizing your ROI faster are of utmost importance to any organization. By optimizing your SharePoint environment, you can not only improve productivity across the enterprise, but also eliminate unnecessary costs related to running and maintaining it.

## Is it time for your SharePoint Health Check?

If you don't know which SharePoint features are being used (or aren't), then how would you suggest improvements or changes? And how will you measure the successful adoption of SharePoint and ROI with SharePoint? Below are some key indicators that would lead you to speak with our experts:

- Has your SharePoint environment been running slower?
- Is Office 365-SharePoint online best suited for your organization?
- Are you ready for migrating to the next version of SharePoint?
- Are you sure that information is available to the right audience, and is secure and governed?
- Are you facing challenges scheduling upgrades, which often require over 72 hours' downtime?
- Have your SharePoint overheads been increasing over time?
- Has user adoption dropped off? Do you know why?
- Are users having tough time searching the relevant information?
- Have you been noticing slower batch performance and backup runs, putting system availability at risk?

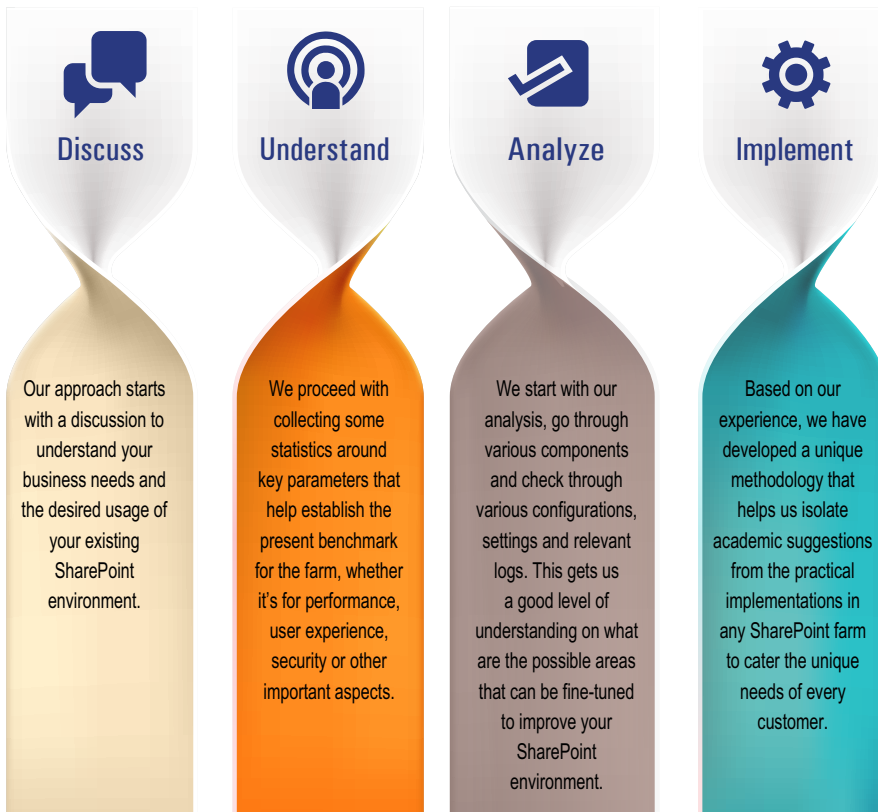
"People won't adopt SharePoint unless it solves their problems, so figuring out exactly what those problems are and taking time to define use cases is key."

## Why you need it?

Given the breadth of functionality that SharePoint provides as a platform, it's very easy to mis-configure certain services or components and endanger the farm's stability as well as the security of the information. Irrespective of their size, any business would choose to be proactive rather than reactive when it comes to dealing with downtimes and performance needs. AgreeYa's extensive Health Check ensures that you are better informed about critical aspects of your production SharePoint solutions and how to tune them to your specific business requirements.



## How is it done?

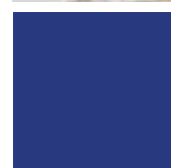


## What is covered under your SharePoint Health Check Plan?

Our health-check covers architecture, scalability, governance, optimal configuration of your SharePoint components, security assessment, backup process review, review of server maintenance schedules and tasks and more:

- High level architecture Assessment and server roles
- Review hardware configurations
- Review IIS, Database and Load Balancer logs\configurations
- Customized components best practices
- Third-Party Software/Components
- Backup, Restore and Disaster Recovery plan
- Performance tuning
- Security and Governance Plan
- Current Site Usage Statistics
- SharePoint 2013, 2016 Apps (provider, and SharePoint hosted) and hybrid app parts
- Workflows and Event Receivers
- Search Configuration

Our SharePoint health check diagnostics reveal the causes of problems, not just the symptoms, helping you to take a proactive approach in addressing the problems.



As an output of all our health checks, we will provide you with a documented set of findings, which will include suggestions for further improvements. With our team of SharePoint experts these activities can be performed on a small SharePoint farm and can go from 24 hours to 72 hours. For more complex and larger farms, we have other detailed and custom offerings to ensure the due diligence in making the appropriate and relevant recommendations.

## Why AgreeYa?

- › Over a decade of experience and deep rooted expertise on SharePoint
- › Backed by Subject Matter Experts and SharePoint certified professionals having worked across domains and industries
- › A result-driven SharePoint infrastructure 'Health Check'
- › End-to-End portfolio of SharePoint Services and Solutions
- › Microsoft Gold Certified Partner.
- › Anywhere, Anytime availability with our strong Global and local presence
- › We work with our clients as strategic partners and not like consultants
- › Expertise in exploring the "Hidden SharePoint factory" and providing solutions

AgreeYa's SharePoint Health Check is a top-down TCO analysis that can help you identify opportunities to simplify your SharePoint and related application portfolio, take further advantage of your existing SharePoint investments.

## Ask for a SharePoint Health Check today

Nobody knows SharePoint like AgreeYa. Let our SharePoint experts evaluate your SharePoint environment from top to bottom. Contact our SharePoint Support specialists today to schedule your SharePoint System Health Check

## About AgreeYa Solutions

AgreeYa is a global systems integrator delivering competitive advantage for its customers through software, solutions, and services. Established in 1999. AgreeYa is headquartered in Folsom, California, with a global footprint and a team of more than 1,700 staff across offices. AgreeYa works with 500+ organizations ranging from Fortune 100 firms to small and large businesses across industries such as Telecom, BFSI, Healthcare, Pharma/Life Sciences, Utility, Technology, Public sector and others.

AgreeYa has received considerable recognition in the industry for its technology leadership, quality processes, and customer success that includes Microsoft Gold partner, SEI CMMI, ISO 9001:2015. We engage with our customer as a trusted partner to live our motto "...building our future on your success".

AgreeYa's software portfolio includes QuickApps (award winning suite of SharePoint web apps and pre-built templates - [www.quickapps.agreeya.com](http://www.quickapps.agreeya.com)), Site Administrator (gain insight for improved compliance and governance of your SharePoint environment - [www.siteadmin.agreeya.com](http://www.siteadmin.agreeya.com)), Recovery Manager (solution for rapid and scalable SharePoint content restores - [www.recoverymanager.agreeya.com](http://www.recoverymanager.agreeya.com)), BeatBlip (simplify software test automation - [www.beatblip.com](http://www.beatblip.com)), and Cogent (comprehensive end-to-end case management solution for collections and law firms - [www.cogentcollections.com](http://www.cogentcollections.com)).

As part of its solutions and services offerings, AgreeYa provides intranet/portal, content management, and collaboration, cloud and infrastructure solutions, business intelligence and big data analytics, product engineering, application development and management, independent software testing, and staffing (IT, Non-IT, and risk/compliance/AML) solutions.

For more information, visit [www.agreeya.com](http://www.agreeya.com)

### Global Headquarters

605 Coolidge Dr., Folsom, CA 95630 USA

Phone : +1 916 294 0075, Toll Free: +1 800 AGREEYA, Fax : +1 866 886 1555

Email : [sales\\_americas@agreeya.com](mailto:sales_americas@agreeya.com)

USA | India | Mexico | Singapore

Gold  
Microsoft Partner



© Copyright 2018 AgreeYa Solutions, Inc. All trademarks, logos and copyrights are the property of their respective owners

[www.agreeya.com](http://www.agreeya.com)